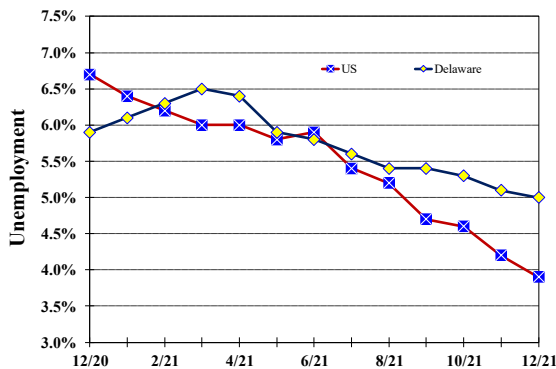


Unemployment Rate

Delaware and US

December 2020 - December 2021



Delaware Civilian Labor Force

Delaware Residents

	Dec. 2021	Nov. 2021	Dec. 2020
Civilian Labor Force	490,900	490,200	481,800
Employed	466,300	465,000	453,600
Unemployed	24,600	25,200	28,200
Unemployment Rate %	5.0	5.1	5.9
US Unemployment Rate %	3.9	4.2	6.7

Source: Delaware Dept. of Labor in cooperation with the US Dept. of Labor, Bureau of Labor Statistics.

Area Unemployment Rates (%)

	Dec. 2021	Nov. 2021	Dec. 2020
New Castle County	4.1	3.9	5.7
Wilmington	5.7	5.5	10.0
Newark	3.2	3.1	4.2
Kent County	4.8	4.5	6.3
Dover	6.0	5.8	9.0
Sussex County	4.2	3.8	5.4

Note: Area rates are not seasonally adjusted.

Source: Delaware Dept. of Labor in cooperation with the US Dept. of Labor, Bureau of Labor Statistics.

Monthly Commentary

Delaware's seasonally adjusted unemployment rate decreased by one-tenth of a percentage point to 5.0 percent in December. The last time Delaware's unemployment rate was at or below 5.0 percent was March 2020 when the unemployment rate was 4.8 percent. Delaware finishes the year with 11,900 more jobs than one year ago. In December, Leisure & Hospitality was up 5,800 jobs over-the-year, while Wholesale & Retail Trade as well as the Construction industry increased 2,300 jobs over-the-year. Professional & Business Services and Manufacturing were down 1,300 and 500 jobs over-the-year, respectively.

Hours & Earnings

All Employee (Total Private)

	Dec. 2021	Nov. 2021	Dec. 2020
Weekly Earnings	\$976.53	\$954.10	\$936.38
Weekly Hours	33.5	32.9	32.2
Hourly Earnings	\$29.15	\$29.00	\$29.08

Delaware Labor Force Trends

Delaware's seasonally adjusted unemployment rate in December 2021 was 5.0%, down from 5.1% in November 2021. There were 24,600 unemployed Delawareans in December 2021 compared to 28,200 in December 2020. The US unemployment rate was 3.9% in December 2021, down from 4.2% in November 2021. In December 2020, the US unemployment rate was 6.7%, while Delaware's rate was 5.9%.

In December 2021, seasonally adjusted nonfarm employment was 453,500, up from 452,200 in November 2021. Since December 2020, Delaware's total nonfarm jobs have increased by a net gain of 11,900, a rise of 2.7%. Nationally, jobs during that period increased 4.6%.

Delaware Nonfarm Employment

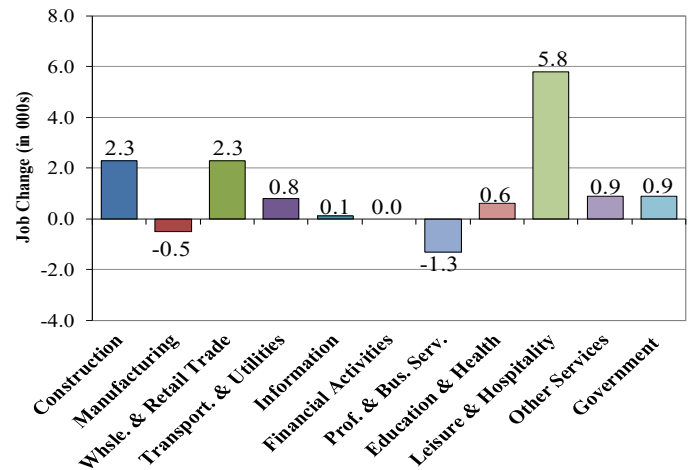
Jobs at Delaware Locations
Seasonally Adjusted (in 000s)

INDUSTRY GROUP	Dec. 2021	Nov. 2021	Over the Month Change	Over the Year Change†
TOTAL NONAG. EMP.	453.5	452.2	1.3	11.9
CONSTRUCTION	24.8	24.7	0.1	2.3
MANUFACTURING	24.6	24.6	0.0	-0.5
Durable Goods	8.9	8.8	0.1	-0.1
Nondurable Goods	15.7	15.8	-0.1	-0.4
TRADE, TRANSP., & UTIL.	84.3	83.7	0.6	3.1
Wholesale Trade	11.2	11.0	0.2	-0.1
Retail Trade	51.5	51.2	0.3	2.4
Transp. & Utilities	21.6	21.5	0.1	0.8
INFORMATION	3.6	3.6	0.0	0.1
FINANCIAL ACTIVITIES	46.6	47.1	-0.5	0.0
PROF. & BUS. SERVICES	59.5	59.6	-0.1	-1.3
EDUCATION & HEALTH	78.3	78.2	0.1	0.6
LEISURE & HOSPITALITY	49.1	48.5	0.6	5.8
OTHER SERVICES	16.8	16.6	0.2	0.9
GOVERNMENT	65.9	65.6	0.3	0.9
Federal Government	5.9	5.8	0.1	0.0
State Government	31.3	31.2	0.1	-0.6
Local Government	28.7	28.6	0.1	1.5

† Annual changes are not seasonally adjusted.
Details may not add up due to rounding and seasonal adjustment.
Source: US Department of Labor, Bureau of Labor Statistics.

Delaware Over-the-Year Job Change

December 2020 — December 2021



Consumer Price Index

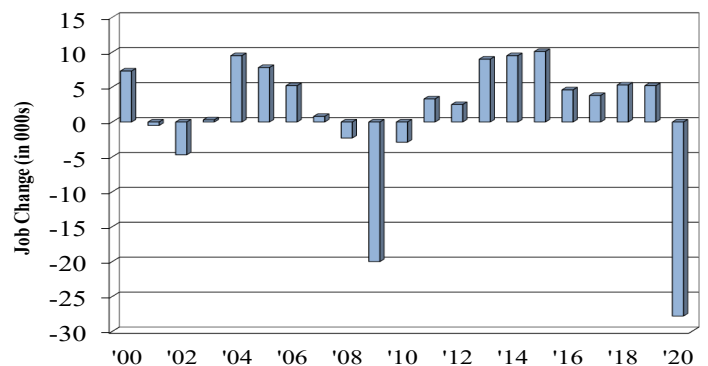
All Urban Consumers

	Percent Change to Dec. 2021 from:		
	Dec. 2020	Oct. 2021	Nov. 2021
US City Average	7.0	0.8	0.3
Phila.-Camden-Wilm.*	6.6	0.9	NA

* Data are published on a bi-monthly basis.

Delaware Annual Net Job Change

Annual Average 2000—2020



Office of Occupational and Labor Market Information

For data questions, contact Tom Dougherty (302) 761-8062

<https://labor.delaware.gov/divisions/oolmi/>